

# FORMOST FUJI

## THE FORMOST TORTILLA BAGGER

*Quality is "First and Formost"*



### FFB Bagger



POSITIVE TORTILLA CONTROL

QUICK, SIMPLE CHANGEOVER

MAINTAINS PRODUCT QUALITY

GENTLE PRODUCT HANDLING

INCREASED PRODUCTION

UP TO 60 BAGS PER MINUTE

### GENTLE, DEPENDABLE BAGGING

Packaging tortillas is no problem for the patented Formost Fuji FFB Tortilla Bagger. Tortillas feed directly from flighted tabletop conveyors into the Tortilla Bagger. Specially designed paddles move the stacks into the bag with a gentle hand-like motion. Our innovative bag opening system provides for greater tolerance of irregularities.

The FFB Bagger is compact, durable and carefully engineered for trouble-free operation. It will save maintenance costs, too. All parts are readily accessible

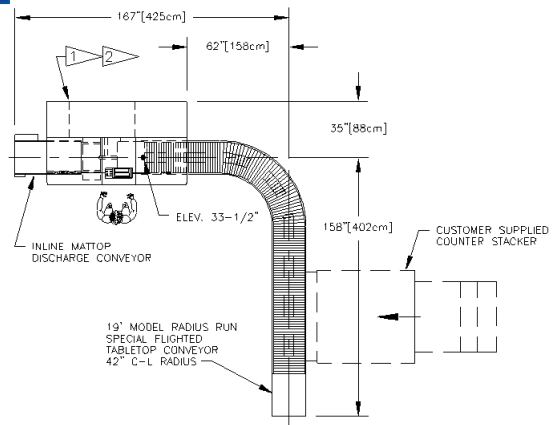
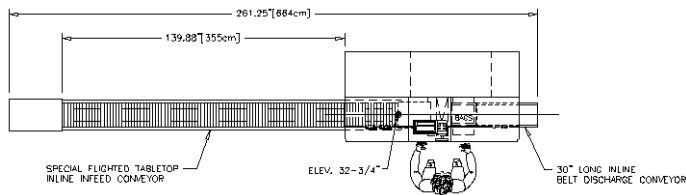
#### FORMOST FUJI CORPORATION

19211 144<sup>th</sup> Avenue NE • Woodinville, WA 98072

Phone: 425-483-9090 • Fax: 425-486-5656 • email: [salesoffice@formostfuji.com](mailto:salesoffice@formostfuji.com)

[www.formostfuji.com](http://www.formostfuji.com)

# Reliable Tortilla Bagging



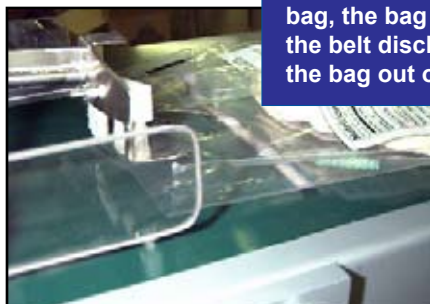
The Formost Fuji Tortilla System is available in several configurations.



The specially designed paddles gently push the stack through the machine and into the bag.



The innovative bag opening system prepares each bag for insertion of the tortilla stacks.



After the tortillas are placed in the bag, the bag opens release and the belt discharge conveyor moves the bag out of the bagger.

**Patent # 5,228,275**

## Optional Features

- Wide product capability
- Continuous, or multi-wicket bag feed
- Spare Parts Kit
- Rear infeed configuration
- In-line infeed configuration
- Counter-stacker
- Automatic bag closure device

FORMOST FUJI FFB BAGGER SPECIFICATIONS			
LENGTH	86" (2185 mm)	PRODUCT LENGTH	6" (152 mm) to 16" (406 mm)
WIDTH	35" (889 mm)	PRODUCT WIDTH	3" (76 mm) to 11" (279 mm)
HEIGHT	52" (1321 mm)	PRODUCT HEIGHT	2" (51 mm) to 5.5" (140 mm)
WEIGHT	1600 lbs. (727 kg)	BAG LENGTH	10" (254 mm) to 22" (559 mm)
SPEED	20 to 60 ppm	BAG WIDTH	5" (127 mm) to 12" (305 mm)

These specifications may vary according to special applications. Specifications are based upon the latest information available at the time of publication. Formost reserves the right to make changes in materials, equipment and specifications without prior notice.

**FORMOST FUJI CORPORATION**  
 19211 144<sup>th</sup> Avenue NE • Woodinville, WA 98072  
 Phone: 425-483-9090 • Fax: 425-486-5656 • email: salesoffice@formostfuji.com

**www.formostfuji.com**